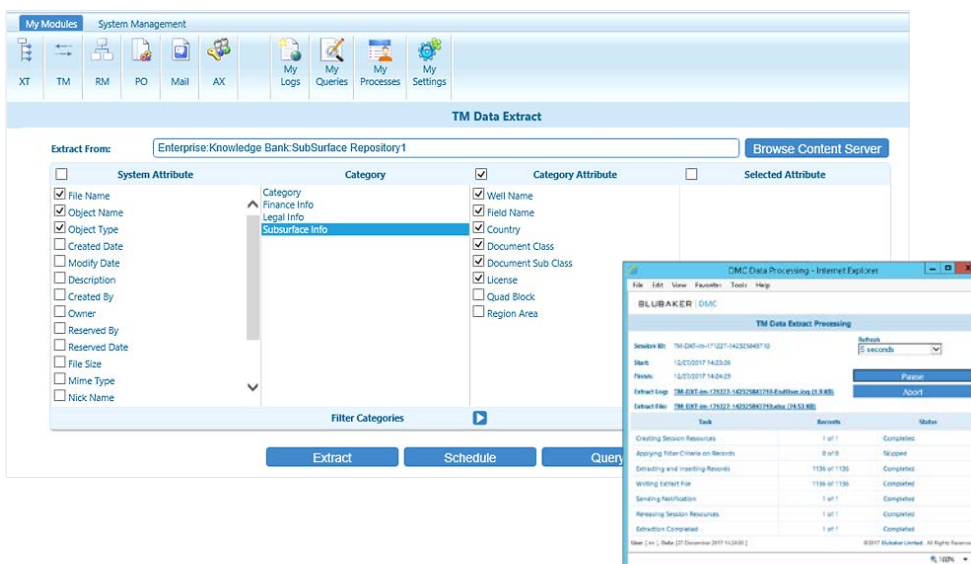


## Product Overview

# The Data Management Console for OpenText Content Server (CS10.x and CS16.x)

The Data Management Console is a powerful and cost effective suite of applications that transforms both yours' and your organizations' ability to commit to and execute major data management initiatives and projects by making it simple, painless and cost effective.

The simplicity of the interfaces and processes returns the power to Information and Data Managers within your organization to actively manage their own data structures, system and custom metadata, records information, and permissions, with no technical skills required.



With no scripting, no SQL or XML skills required the simplicity will transform productivity in your data and information management business functions: -

- Facilitates Data Management user 'buy-in'
- Significantly increased productivity
- The systems being managed become more productive
- Improved data integrity and end user confidence
- Increased user adoption

The Data Management Console delivers immediate and tangible value to your business: -

- Reducing 'Total Cost of Ownership'
- Reducing data processing times by up to 80%
- Reduced data migration and population time frames
- Reduced system deployment time lines
- Accelerated 'Time to Value' and increase ROI

### Simplicity and Power

Applications designed by the business – for the business.

### Metadata Management

Manage System and Custom Category attributes – apply, extract, edit and update system and custom category metadata.

### Legacy Data Migration

Discover, cleanse, classify and load high-volume data from your file server environment to Enterprise Server within a spreadsheet environment.

### Object Management

Create high-volume data sets easily - move, copy or delete high-volume objects sets from, to and within complex folder structures.

### Object Export

Extract objects and their metadata to any external location for archiving and/or distribution.

### Manage Object Permissions

Extract, edit and update permissions on complex object structures in minutes.

### Manage RM Classifications

Load, apply, extract, edit and update Livelink ECM Records Management classifications in a simple easy to use format.

### Intuitive Interface and Functional Processes

DMC is designed to provide your data management teams with simple intuitive interfaces that provide clear and concise views of your object, metadata and classification structures.

Standardized process functionality is utilised throughout the application suite making navigation, data selection and functional processing simple and habitual, whatever your required objective.

The design philosophy that utilizes the simple output and input format of MS Excel allows anyone with basic Microsoft Excel skills to load, extract, edit and update a vast array of data that will enhance the integrity and accessibility of information across your Content Server environment.

DMC2 modules can be acquired individually or as a selected bundle to meet you current specific requirements: -

<b>DMC - XT</b>	<b>External Data Management</b> Discover, cleanse, classify and load high volume legacy data from your file share and network drives environment to Enterprise Content Server
<b>DMC - TM</b>	<b>Taxonomy Management</b> Apply, extract, edit and update system and custom category attributes. Create high volume data sets and then move, copy, delete high volume object sets from, to and within complex folder structures
<b>DMC - AX</b>	<b>Permissions Management</b> Extract, edit and update mass permissions for groups and/or user on complex object structures in minutes
<b>DMC - RM</b>	<b>Records Management</b> Load, apply, extract, edit and update your Record Detail Information, add and/or change classifications and add or remove holds to multiple records
<b>DMC - PO</b>	<b>Physical Objects Management</b> Load, apply, extract, edit and update your Physical Objects and manage their metadata
<b>DMC - MAIL</b>	<b>Email Content Management</b> Discover, cleanse and migrate your legacy PST file <u>content</u> to Content Server

Information and Data Management business functions can now easily deliver the enhanced integrity and accessibility of information across your Content Server environment that gives you, your group and your organization the competitive edge...making better informed decisions...faster.

### ■ Target Users/ Groups

- Administrators
- Knowledge Managers
- Records Managers
- Data Managers

### ■ Value Proposition

#### Simplicity and Power...

Increase confidence in your information and data integrity, and increase user adoption.

#### Reduce Total Cost of Ownership...

Additional resources with specific SQL, XML or DBA knowledge and skills are no longer required to manage data and information.

#### Increase productivity...

Reduce data processing times and increase productivity by up to 80% in your information and data management functions.

#### Increase ROI...

Reduce data population and system deployment time and accelerate 'Time to Value' on your investment.



For more Information Contact: -



**Blubaker Limited**

7 Queens Gardens  
Aberdeen, Scotland. AB15 4YD  
Tel : +44 1224 619202  
[info@blubaker.com](mailto:info@blubaker.com)

**opentext™** Partner  
Technology Registered